

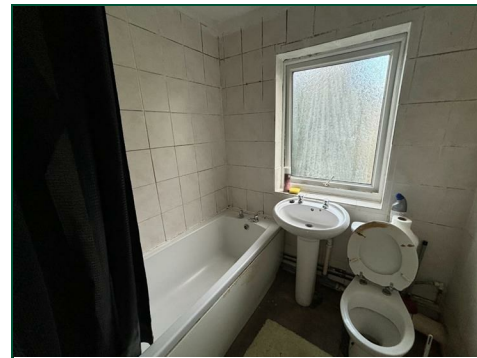


# Wade Meadow Court

Lings, Northampton

oriordanbond  
SALES & LETTINGS





## Wade Meadow Court

Lings

NN3 8NB

PRICE £180,000

A modern three bedroom terraced property, situated in the popular Lings area, offered for sale with no onward chain. The property provides good access to local amenities, schooling as well as Weston Favell Shopping Centre.

The accommodation comprises entrance hall, cloakroom/WC, a spacious sitting room and a large kitchen/dining room. The first floor offers two large double bedrooms, a smaller double bedroom, and a family bathroom. Outside are enclosed front and rear gardens and communal parking. Further benefits include uPVC double glazing and gas radiator heating. (C/852/S)

### Additional information

- Council Tax Band: A
- Energy Efficiency Rating:

### Viewing

Viewing strictly by appointment – details below

### Disclaimer

O'Riordan Bond Estate Agents Limited has not tested apparatus, equipment, fittings or services and so cannot verify they are in working order. The buyer is advised to obtain verification from their solicitor or surveyor.

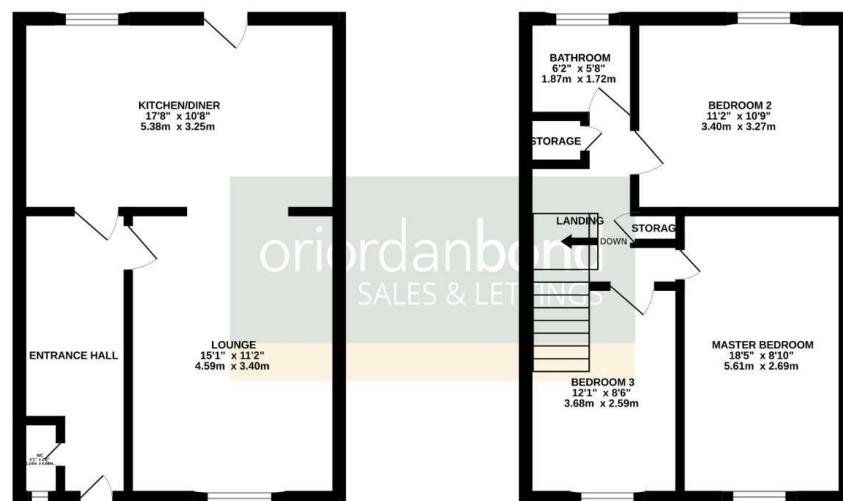
O'Riordan Bond Weston Favell Sales

01604 784007

westonfavell@oriordanbond.co.uk

GROUND FLOOR  
426 sq.ft. (39.6 sq.m.) approx.

1ST FLOOR  
426 sq.ft. (39.6 sq.m.) approx.



TOTAL FLOOR AREA : 852 sq.ft. (79.2 sq.m.) approx.  
Whilst every attempt has been made to ensure the accuracy of the floorplan contained herein, measurements of doors, windows, rooms and any other items are approximate and no responsibility is taken for any error, omission or mis-statement. This plan is for illustrative purposes only and should be used as such by any prospective purchaser. The services, systems and appliances shown have not been tested and no guarantee as to their capability or efficiency can be given.  
Made with Metropix 02025

